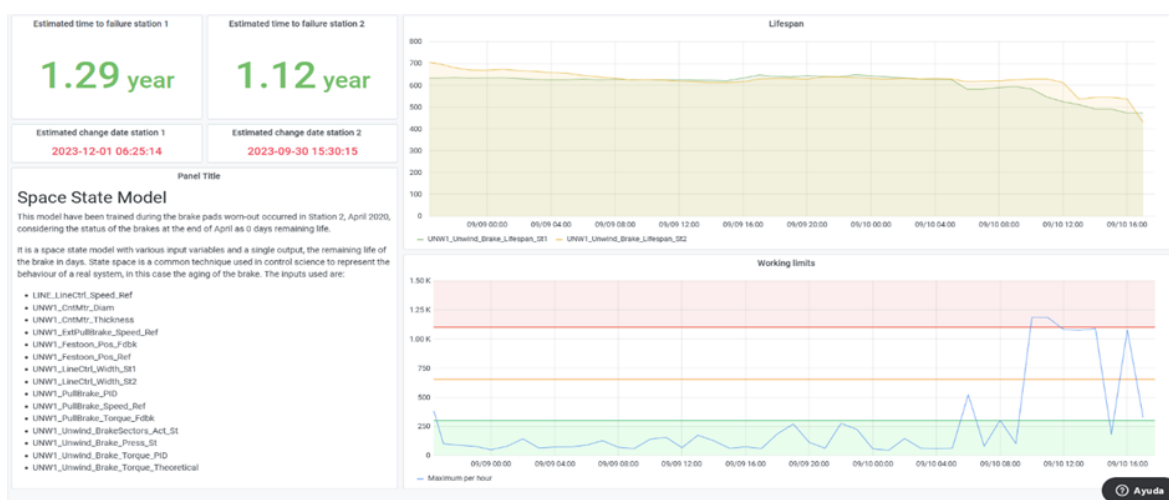


TORRESFACTORY, A DIGITAL SYSTEM MODEL THAT OFFERS FULL LINE PERFORMANCE

Regular maintenance must ensure that the system always offers full performance. By determining major recurrent causes of breakdowns and key process cycles, it is possible to better evaluate which maintenance measures are required. With **TorresFactory**, MTorres created a **Digital System Model**, that constantly compares your current performance versus the model, highlighting areas that are not performing as they should, or providing insights of parts that may need to be replaced. MTorres customizes your dashboards according to your specific process and needs, while taking advantages of your current SCADA system.



**You have the
information,
we manage it.**

MTorres has created a model considering your key process factors in order to get the best possible combination of machine, process and operators. Moreover, cycle patterns are developed to watch line critical process, showed in a friendly manner, that allows you to understand the real problem and take quick and specific actions.



What does TorresFactory do for you?

- Manages different dashboards depending on the needs of the person or their specific role. This includes specific dashboards for operators, maintenance team or plant managers. Each role could have a custom board with a quick and easy access to key parameters and data to analyze shifts, days, machine facilities and enterprise in order to cover its specific needs.
- Minimizes efforts to follow up production performance (availability), improve productivity, quality (performance) and with a quick return on investment (cost reduction).
- It structures, analyzes and correlates all of the information in order to provide added-value actions as production and maintenance costs, searching for the highest profitability. It improves every factory maintenance and production activities through understandable, manageable and accessible data.